

## Roe Highway Extension Bibra Lake / Murdoch Chase Residents' Update

South Metro Connect, comprising Main Roads and AECOM, is working on the project development phase of the proposed extension of Roe Highway from its current terminus at Kwinana Freeway in Jandakot to Stock Road in Coolbellup.

Our Aim is to work collaboratively with the community to identify the best design and alignment option within the project boundaries that will respect the local environment and still be able to meet the growing traffic demands and associated social issues within the rapidly expanding southern corridor. The preferred option will form the basis of the Environmental Impact Assessment that is subject to both the State and Federal approval process.

### Preliminary design option

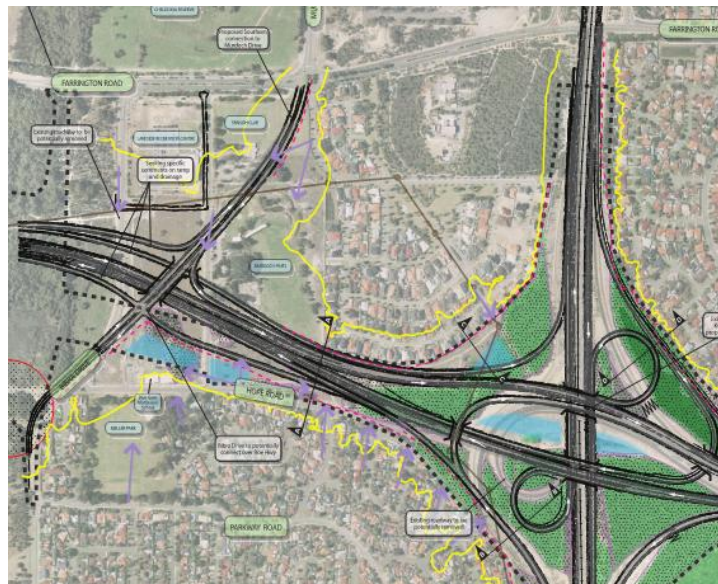
At the first design workshop held in relation to the Roe Highway Extension project, South Metro Connect presented a discussion drawing showing potential changes to the Kwinana Freeway interchange and the proposed new southern connection to the Murdoch Activity Centre, which includes the Fiona Stanley Hospital that is expected to open in 2014.

The southern connection to the Murdoch Activity Centre generated significant discussion related to the Roe Highway / Bibra Drive connection and the Farrington Road / Murdoch Drive / Allendale Entrance roundabout.

#### Roe Highway / Bibra Drive Connection

The southern connection to the Murdoch Activity Centre from Roe Highway presented in the discussion drawing for the first design workshop showed a connection at Bibra Drive north of Hope Road with a north easterly realignment of Bibra Drive that would take it to the Farrington Road / Murdoch Drive / Allendale Entrance roundabout. Feedback on this alignment from workshop participants included:

- Majority preference that there should not be a connection from Roe Highway to Bibra Drive
- Concerns were raised that Bibra Drive would be used as a short cut therefore increasing traffic, and
- The alignment would have significant negative impact on land used for recreational activities.



**Figure 1: Design Workshop 1 Discussion Drawing**

#### Farrington Road / Murdoch Drive / Allendale Entrance Roundabout

The discussion drawing showed an alternative road alignment to that shown in the Murdoch Activity Centre Structure Plan (Part A - Fiona Stanley Hospital and Health Precinct) June 2007. This alternate alignment was created based on an understanding that the associated impact on Murdoch University land was undesirable. Feedback on this location from workshop participants included:

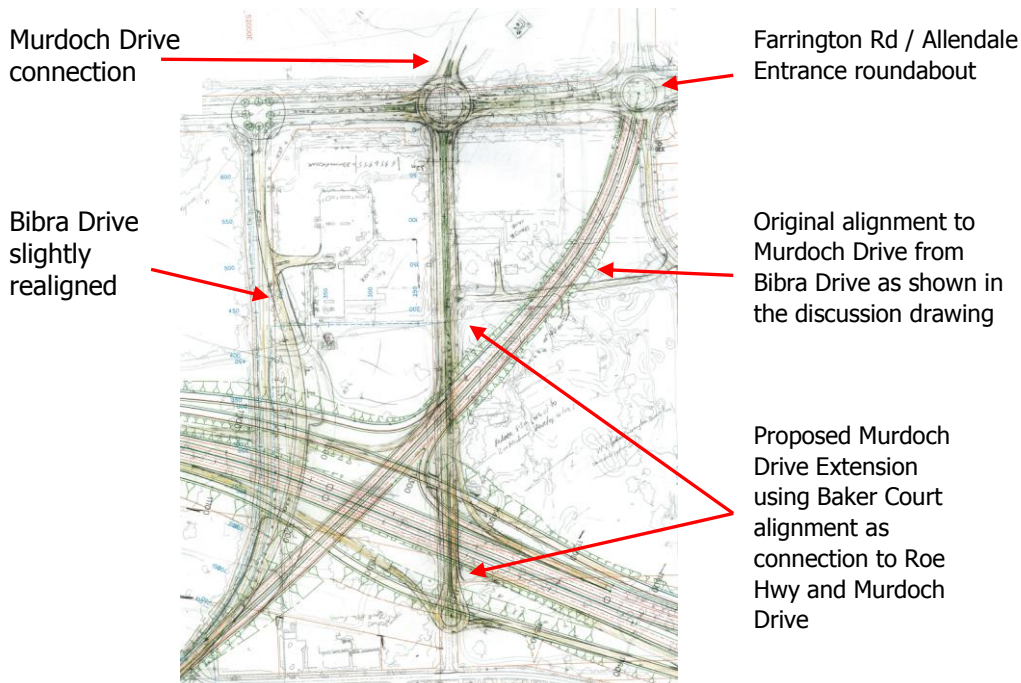
- Allendale Entrance, which connects to the Farrington Road / Murdoch Drive roundabout, is the only entrance to the Murdoch Chase subdivision and increased traffic would create safety concerns for residents
- Residents had understood and accepted the road alignment shown in the Murdoch Activity Centre Structure Plan (Part A - Fiona Stanley Hospital and Health Precinct) June 2007, and
- Pedestrians, particularly children would have difficulty in safely crossing Farrington Road.

### The changes we made in accordance with your feedback

All comments relevant to this proposed connection were taken away and reviewed and although some comments indicated a preference for a connection from Bibra Drive to Roe Highway, the majority of comments received did not. Based on this and the issues raised about the Farrington Road / Murdoch Drive / Allendale Entrance roundabout, further work was undertaken to see how the issues could be addressed. In addition to this, South Metro Connect considered the potential impacts on and issues raised by stakeholders in the area including:

- Murdoch University
- Lakeside Recreation Centre
- Murdoch Pines Golf and Recreation Club, and
- The Spanish Club.

As a consequence, South Metro Connect created a potential alternative that would address the issues to the maximum extent possible, while attempting to minimise impact on any individual stakeholder or group. This alternate proposal is reflected in the 'Work in Progress' sketch shown below.



**Figure 2: Work in Progress sketch**

Here the original alignment, as shown in the discussion drawing, is visible. What is also shown is a deviation from that alignment to one that shows Roe Highway passing under Bibra Drive and not connecting to Roe Highway. Instead, the required connection to link to Murdoch Drive (Murdoch Drive Extension) and the Murdoch Activity Centre is shown using the Baker Court alignment. By doing this there is no connection to the Farrington Road / Murdoch Drive / Allendale Entrance roundabout. However, impact on Murdoch University land occurs and there will still be some impact on the recreational properties.

### The latest design

Work on this alternate proposal has continued to ensure that all traffic movements can be accommodated at the Roe Highway / Murdoch Drive Extension interchange. These traffic movements must enable vehicles from north, south, east and west to connect between the Murdoch Activity Centre and Roe Highway. Further work has provided for this traffic movement and therefore this is the most likely outcome.

The realignment of Bibra Drive at the northern end is primarily to provide sufficient length to enable the road to pass over the Roe Highway, whilst minimising the impacts of retaining walls on the residential properties bounded by Hope Road and Bibra Drive to the south. This has the added advantage that the existing Hope Road connections can remain if required and enables Bibra Drive to remain open while the bridge structure and approaches are being constructed. Additionally, it will also avoid encroachment on adjacent vegetation to the west within the wetlands and will utilise degraded land to the east of Bibra Drive, without the need for extensive retaining walls.

Existing traffic signals retained, but modified signal timing.

Bibra Drive realigned to pass over Roe Highway



Existing Farrington Road / Murdoch Drive/ Allendale roundabout retained, but Murdoch Drive leg closed off.

Farrington Road / re-aligned Murdoch Drive signalised intersection

Modified accesses to Lakeside Recreation Centre and the Spanish Club of WA / Murdoch Pines Recreation Centre

New dedicated Murdoch Drive Extension to Roe Highway

**Figure 3: Current Proposed Conceptual Design sketch**



This option has been optimised based on a combination of the traffic requirements, effects on impacted stakeholders, environmental and geometric parameters.

The advantages of this design are:

- The existing Farrington Road / Murdoch Drive / Allendale Entrance roundabout will be retained, but the Northern (Murdoch Drive) leg removed. The configuration for this junction has been assessed as providing the best level of service for traffic movements, and has the advantage that other than some modifications to some signing, there would only be minor physical alterations to the north, thus retaining the existing landscaping on the roundabout and other approaches
- Bibra Drive will continue as a local road where short cuts will be less likely to occur. The existing signalised junction with Farrington Road will be maintained
- All traffic movements to and from the Murdoch Activity Centre via the Roe Highway are accommodated, without additional traffic on Bibra Drive. These movements are controlled at the proposed new Murdoch Drive/Farrington Road by a new signalised intersection, and
- Impacts on the Spanish Club and Murdoch Pines Golf and Recreation Centre are reduced.

This design will be the preferred option for submission to the Office of the Environmental Protection Authority for Public Environmental Review in September 2010.

## Principal Shared Path

A Principal Shared Path (PSP) is not currently shown in the conceptual design. However, a PSP will be included as part of the preferred design and will link to the existing PSP on Kwinana Freeway and to the local bicycle network.

## Contact us

If you have any queries, please contact us by telephone on 1800 132 572, or by email at [enquiries@southmetroconnect.com.au](mailto:enquiries@southmetroconnect.com.au). You can also write to us at:

**South Metro Connect**  
**PO Box 5026**  
**South Lake**  
**WA 6164**